

# UV-EFFECT TRANSPARENT

**TRANSPARENT UV-SPRAY WITH  
FLUORESCENT EFFECT!  
ONLY VISIBLE UNDER INCIDENT UV LIGHT!**

Montana UV-EFFECT is a transparent effect paint that is only visible under direct UV light. Able to be sprayed on nearly any substrate, the colorless and semi-gloss paint is not visible in sunlight rather illuminates when exposed to UV light with a glowing, blue-purple color. Ideal for indoor use, the luminous spray can be a great tool not just for making art or art happenings, but also in practical contexts such as Guerilla Marketing, night clubs, venue and property marking. The Montana UV-EFFECT Spray can be applied to numerous substrates such as coated and uncoated screens, masonry, wood, glass and more. The UV light effect becomes more prevalent, the more coats are applied particularly when applied with a stencil. Visibility: Due to the UV EFFECT's semi-gloss finish, the UV EFFECT spray can be slightly visible if painted on a matt substrate.

**NEW**  
EFFECT SPRAY



**UV-EFFECT SPRAY 400ml**  
ONLY VISIBLE UNDER INCIDENT UV LIGHT!



Refer to the HOW TO video section on our website or follow us to explore inspiring and sophisticated DIY projects:

[WWW.MONTANA-CANS.COM/HOWTO](http://WWW.MONTANA-CANS.COM/HOWTO)  
[WWW.MONTANA-CANS.BLOG/DIY](http://WWW.MONTANA-CANS.BLOG/DIY)

FOLLOW US ON   @ALLSPRAYPAINTED

**MONTANA**  
**CANS** 

# LUMINESCENT UV-EFFECT SPRAY

TRANSPARENT EFFECT PAINT THAT IS ONLY  
VISIBLE UNDER DIRECT UV LIGHT!



[WWW.MONTANA-CANS.COM](http://WWW.MONTANA-CANS.COM)

H A D  
A  
H A M M E R

**THE MONTANA-CANS**

**UV-EFFECT SPRAY**

**A TRANSPARENT EFFECT PAINT THAT IS ONLY  
VISIBLE UNDER DIRECT UV LIGHT!**

Montana UV-EFFECT is a transparent effect paint that is only visible under direct UV light. Able to be sprayed on nearly any substrate, the colorless and semi-gloss paint is not visible in sunlight rather illuminates when exposed to UV light with a glowing, blue-purple color. Ideal for indoor use, the luminous spray can be a great tool not just for making art or art happenings, but also in practical contexts such as Guerilla Marketing, night clubs, venue and property marking. The Montana UV effect Spray can be applied to numerous substrates such as coated and uncoated screens, masonry, wood, glass and more. The UV light effect becomes more prevalent, the more coats are applied particularly when



VARNISH Spray Filter is equipped with the Flat Jet Cap Medium that is able to be adjusted to a vertical or horizontal output for smooth and equal delivery of the spray output - Perfect for application on objects or sealing surfaces!



UV1000 UV Effect Transparent



Objects coated with UV-EFFECT at daylight



same Objects in darkness under UV-Light

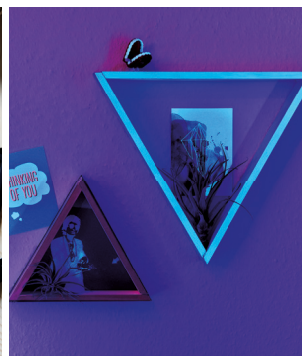


applied with a stencil. \*Visibility: Due to the UV-EFFECT's semi-gloss finish, the UV-EFFECT spray can be slightly visible if painted on a matt substrate. The application of the Montana GLOSS Varnish can be used to create an all over gloss finish which discretely hides the UV spray under one gloss coat. The UV-EFFECT spray is compatible with other color and effect coatings within the MONTANA CANS range as long as total curing time has occurred. (24 - 48 hours). The Montana UV-EFFECT spray Available in the usual 400ml can format for easy and comfortable use.

**SHINES UNDER UV-LIGHT**  
**WORKS ON MANY SURFACES**  
**COMPATIBLE WITH MONTANA PAINTS**  
**SEMI GLOSS FINISH**  
**UV-RESISTANT**

More information can be found on the Montana Cans website:

**WWW.MONTANA-CANS.COM/HOWTO**



**TRANSPARENT EFFECT THAT ILLUMINATES WHEN EXPOSED TO UV LIGHT WITH A GLOWING, BLUE-PURPLE COLOR!**