

TEXTURE COAT

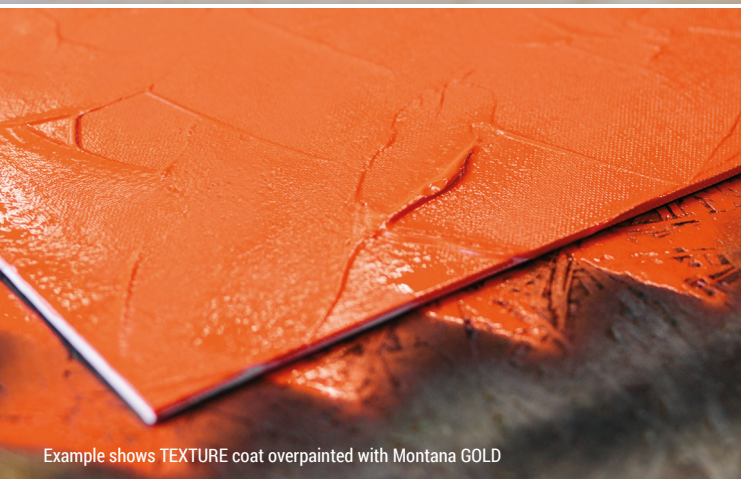
THICK COATING SPRAY

Grey texture spray to generate sculptured impasto surfaces. Suitable for creative works of all kinds, as well as filling material to patch up small irregularities such as cracks, holes or as a foundation. Applicable on many different surfaces such as wood, glass, stone, ceramics, porcelain, acrylic and other non-elastic surfaces. By spraying your object with a thick layer of the TEXTURE spray, the foundation will be coated with a high-grade, well adhering substance that can be molded while wet to achieve the desired structure. The structure spray can be wet sanded after a very short drying time. After thoroughly dry and cured, TEXTURE spray can be top-coated with many common lacquer types. The TEXTURE spray has good adherence and is highly water resistant. TEXTURE spray offers increased anticorrosive protection to the surfaces it is applied to.



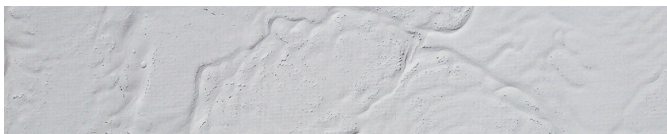


Example shows TEXTURE spray applied on a canvas and shaped with a scraper



Example shows TEXTURE coat overpainted with Montana GOLD

VIDEO ONLINE: WWW.MONTANA-CANS.COM/HOWTO



T8000 Texture Grey
TNR: 415432