

Product information | TECHNICAL DATA SHEET

Hardcore. Solid Colors. Gloss paint, high pressure, perfect coverage and ultra fast drying times.
400 ml, 11 Oz, 312 g.

GENERAL DESCRIPTION

At Montana Colors we wanted to do a more complete update on our most historical product; Hardcore, the spray can format that transformed the concept of worldwide graffiti in 1996. The new Hardcore 2 maintains its main features: a gloss finish and high pressure yet with a new formulation that allows for a much quicker drying time and excellent coverage over the whole color range. It's formulated with quick-drying, alkyd resins and the highest quality pigments.

FEATURES

- High pressure.
- Fast drying.
- Good hardening.
- Excellent flexibility.
- Strong resistance to scratching once the film is polymerized.
- Does not contain lead nor other heavy metals.
- Good covering capability.
- Retains its glossiness and color.
- Easy to apply and repaint.
- Very good resistance to the sun and rain.
- Very good resistance to UV light (see chart).

INSTRUCTIONS FOR USE

- Shake the aerosol well before using, approximately for one minute after hearing the sound of the mixer.
- Apply to clean, dry surfaces. On rusty metallic surfaces remove rust with a wire brush and prepare an anti-rust primer if considered necessary. Apply an anchor layer on plastics and polyesters.
- For best results apply in thin layers. Three thin layers are always better than one thick one, and may be repainted within fifteen minutes with the same paint.
- Turn the aerosol upside down to clean out the valve after use.
If te nozzle becomes blocked replace it with a new one.
- Never apply to equipment that is plugged in and use in well ventilated areas.
- Request safety datasheets.

PHYSICAL PROPERTIES

High pressure:	Polyvalent female valve
Propellant:	Butane / Propane / Mix
Binding type:	Modified alkyd
Color:	See chart
Shine 60° (ASTM D-523 ISO 2813):	60-85% gloss <20 % mat
Dry to the touch (ASTM D-1640 ISO 1517):	15'
Completely dry (ASTM D-1640 ISO 1517):	24 h
Thickness of dry layer (ASTM D-823 ISO 2808):	15 micras/layer
Adherence (ASTM D-3359 ISO 2409):	0 B
Theoretical yield (pintado en continuo):	3 m² for 400 ml
Thinner:	Aromatic mixture
Product life:	(Well Stored) 10 Years
Condition for application:	Minimum room temperature 8°C Surface temperature 5°C a 50°C Max humidity 85% R.H.P
Heat resistance of paint:	100°C

* All of the adherence tests have been carried out on iron plates.

APPLICATIONS

Due to the product's features we recommend that it be used for touch-ups on all kinds of materials. Whether for industrial use, domestic use, craftwork, fine arts, and in short, anywhere that requires a spray paint of the highest quality.

- DIY
- Fine arts
- Plumbing
- Transport
- Garfering
- Graffiti and Muralism
- Industry
- Sign painting

APPEARENCE



LABEL



CAP SYSTEM



CAUTION



COLORS 109 Colors

 RV 252 A Unicornio Unicorn Yellow	 RV 246 Marrón Druida Druidic Brown	 RV 235 Verde Veneno Poison Green	 RV 253 Verde Elemento Element Green	 RV 254 Verde Max Max Green	 RV 255 Azul Patagonia Patagonia Blue	 RV 29 Azul Artico Arctic Blue	 RV 227 Azul Waimea Waimea Blue
 RV 222 Amarillo Playa Beach Yellow	 RV 247 Marrón Tepuy Tepuy Brown	 RV 236 Verde Mojito Mojito Green	 RV 15 Verde Manzana Apple Green	 RV 219 Verde Paris Paris Green	 RV 231 Azul Cousteau Cousteau Blue	 RV 8 Azul Claro Light Blue	 RV 228 Azul Zepelin Zepelin Blue
 RV 20 Amarillo Fiesta Party Yellow	 RV 248 Marrón Baobab Baobab Brown	 RV 16 Verde Pistacho Pistachio Green	 RV 250 Verde Rambo Rambo Green	 RV 220 Verde UFO UFO Green	 RV 232 Azul Glaciar Glacier Blue	 RV 217 Azul Avatar Avatar Blue	 RV 229 Azul Andromeda Andromeda Blue
 RV 1021 Amarillo Claro Light Yellow	 RV 249 Marrón Galgo Greyhound Brown	 RV 34 Verde Guacamole Guacamole Green	 RV 6013 Verde Caqui Khaki Green	 RV 21 Verde Quirúrgico Surgical Green	 RV 14 Azul Planeta Planet Blue	 RV 30 Azul Eléctrico Electric Blue	 RV 5002 Azul Ultramar Ultramarine Blue
 RV 11 Amarillo Ganges Ganges Yellow	 RV 8002 Marrón Tostado Toasted Brown	 RV 237 Verde Cologno N Cologno N. Green	 RV 6003 Verde Olivo Olive Green	 RV 6016 Verde Oscuro Dark Green	 RV 233 Azul Christiania Christiania Blue	 RV 5005 Azul Oscuro Dark Blue	 RV 230 Azul Leviatán Leviathan Blue
 RV 17 Arena Tenere Tenere Sand	 RV 35 M. Chocolate Chocolate Brown	 RV 5 Verde Lutecia Lutecia Green	 RV 251 Verde Bosque Forest Green	 RV 221 Verde Perséfone Persephone Green	 RV 234 Azul Indigo Indigo Blue	 RV 218 Azul Neptuno Neptune Blue	 RV 75 Azul Nostro Nostro Blue
 RV 256 Malva Malva	 RV 258 Rosa Manga Manga Pink	 RV 259 Flamingo Flamingo	 RV 208 Calabaza Pumpkin	 RV 206 Amarillo Atacama Atacama Yellow	 RV 6 Gris Claro Light Grey	 RV 9010 Blanco Divinidad Divinity White	
 RV 214 Violeta Violet	 RV 224 Violeta Bruja Witch Violet	 RV 211 Rosa Amor Love Pink	 RV 223 Rojo Buda Buddha Red	 RV 2003 Naranja Pastel Pastel Orange	 RV 1017 Melocotón Peach	 RV 262 Gris Materia Matter Grey	 Blanco Satinado Satin White
 RV 215 Violeta Profeta Prophet Violet	 RV 225 Violeta Geisha Geisha Violet	 RV 4003 Erika Erika	 RV 33 Rojo Colorado Colorado Red	 RV 2004 Naranja Orange	 RV 1028 Amarillo Medio Medium Yellow	 RV 7040 Gris Perla Light Grey	 Blanco Mate Matte White
 RV 3 Violeta Azulado Blue Violet	 RV 4006 Púrpura Purple	 RV 4010 Magenta Magenta	 RV 3020 Rojo Claro Light Red	 RV 209 Naranja Calcuta Calcuta Orange	 RV 207 Mango Mango	 RV 7031 Gris Oscuro Dark Grey	 RV 9011 Negro Black
 RV 216 Violeta Anónimo Anonymous Violet	 RV 226 Violeta Tube Tube Violet	 RV 212 Rojo Akari Akari Red	 RV 3001 Rojo Vivo Vivid Red	 RV 210 Naranja Prometeo Prometheus Orange	 RV 8023 Mostaza Mustard	 RV 263 Gris Spútnik Sputnik Grey	 Negro Satinado Satin Black
 RV 264 Violeta Galaxia Galaxy Violet	 RV 4007 Cereza Cherry	 RV 213 Rojo Merlot Merlot Red	 RV 3004 Rojo Burdeos Bordeaux Red	 RV 260 Rojo Iroko Iroko Red	 RV 261 Marrón Pangea Pangea Brown	 RV 7016 Gris Antracita Anthracite Grey	 Negro Mate Matte Black

Pop Colors

 RV 238 Amarillo Gigante Giant Yellow	 RV 239 Amarillo Lúxor Luxor Yellow	 RV 240 Naranja Kenya Kenya Orange	 RV 244 Rosa Miami Miami Pink	 RV 241 Rojo Madrid Madrid Red
 RV 242 Rojo Sòviet Soviet Red	 RV 6018 Verde Valle Valley Green	 RV 245 Cian Cyan	 RV 243 Azul Babilonia Babylon Blue	 RV 27 Violeta Vampiro Vampire Violet

Metallic colors

 Plata Silver	 Oro Gold	 Cobre Copper
 Resina Transparente Brillante Glossy Transparent		

Opacity level Outside endurance

Due to technical reasons this color chart might not reproduce the real colors. For accurate color reference see the spraycan's Donut. © Montiana Colors 2018.



PACKAGING

High pressure.
 Nominal capacity: 400 ml.
 heat resistance of packaging: <50°C
 Propellant: GLP – HC C₃-C₄

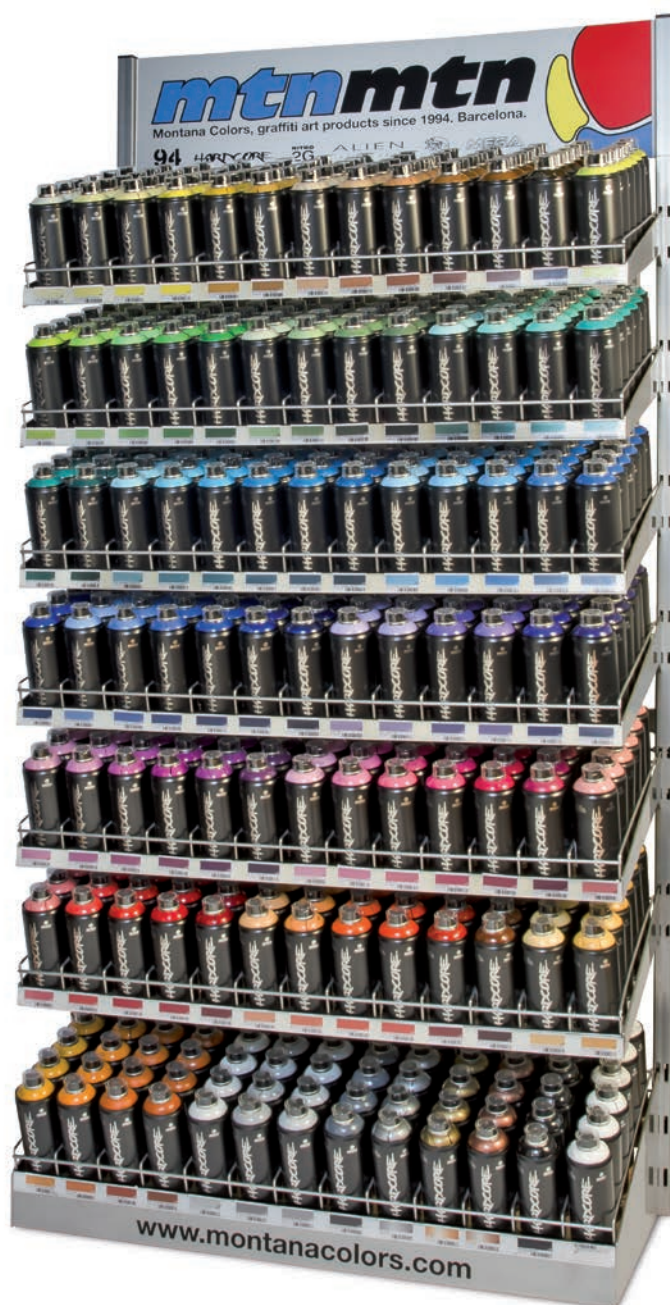
Box (6 units)
 205 X 140 X 200 mm.



DISPLAY RACK

Height / Width / Depth
 205 x 98,50 x 50 cm
 Capacity: 546 sprays.
 References: 91

SPAT2405007



Product information | TECHNICAL DATA SHEET

Hardcore. Solid Colors. Gloss paint, high pressure, perfect coverage and ultra fast drying times.
400 ml, 11 Oz, 312 g

GENERAL DESCRIPTION

The Hardcore 2 metallic colors are formulated with fast-drying, solvent based acrylic resins and inorganic, metallic pigments. (leafing).

FEATURES

- High pressure.
- Fast drying.
- Excellent flexibility.
- Does not contain lead nor other heavy metals.
- Excellent metallic finish.
- Easy to apply and repaint. With the same paint.
- Not rub resistant.
- Low resistance to the sun and rain.
- Does not contain anti corrosive properties.

INSTRUCTIONS FOR USE

- Shake the aerosol well before using, approximately for one minute after hearing the sound of the mixer.
- Apply to clean, dry surfaces. On rusty metallic surfaces remove rust with a wire brush and prepare an anti-rust primer if considered necessary. Apply an anchor layer on plastics and polyesters.
- For best results apply in thin layers. Three thin layers are always better than one thick one, and may be repainted within fifteen minutes with the same paint.
- Turn the aerosol upside down to clean out the valve after use.
If the nozzle becomes blocked replace it with a new one.
- Never apply to equipment that is plugged in and use in well ventilated areas.
- Because of the nature of its pigments, these paints cannot be varnished or repainted with other solvent based paints. They can be repainted with Montana paints.
- Request safety datasheets.

PHYSICAL PROPERTIES

High pressure:	Polyvalent female valve
Propellant:	Butane / Propane / Mix
Binding type:	Ketonic
Color:	See chart
Dry to the touch (ASTM D-1640 ISO 1517):	10'
Completely dry (ASTM D-1640 ISO 1517):	24 h
Thickness of dry layer (ASTM D-823 ISO 2808):	15 micras/layer
Adherence (ASTM D-3359 ISO 2409):	0 B
Theoretical yield (continuous painting):	3 m ² for 400 ml
Thinner:	Aromatic mixture
Product life:	(Well Stored) 10 Years
Condition for application:	Minimum room temperature 8°C Surface temperature 5°C a 50°C Max humidity . 85% R.H.P
Heat resistance of paint:	150°C

* All of the adherence tests have been carried out on iron plates.

COLOR



CAUTION



APPLICATIONS

They provide a highly decorative, metallic look to the surfaces painted and are especially suitable for indoor use in the plastic and fine arts. Outdoor resistance is very low.

- DIY
- Fine arts
- Creativity
- Crafts
- Graffiti
- Scenography

APPEARANCE



LABEL



▮▮▮ Opacity level ✪✪✪ Outside endurance

CAP SYSTEM



PACKAGING

High pressure.
Nominal capacity: 400 ml.
Heat resistance of packaging: <50°C
Propellant: GLP – HC C₃-C₄

Box (6 units)
205 X 140 X 200 mm.

